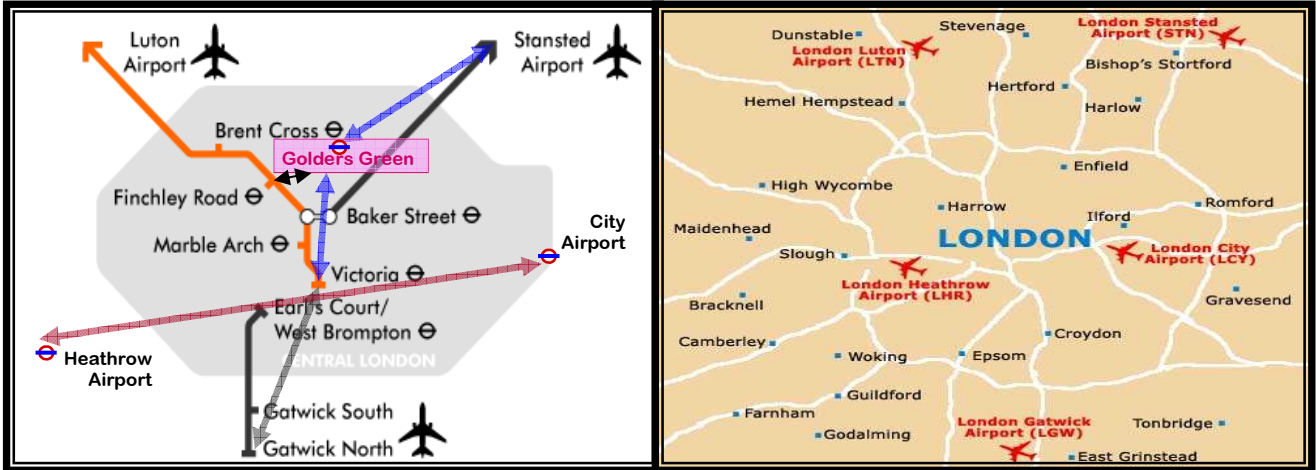


London Underground + Airport Trains and **easyBus**, **Greenline** and **National Express** Routes From All London Airports to Anchor House Hotel, London



Direction From Stansted Airport (STN):



By Bus: **easyBus** and **National Express** coaches run from Stansted to London.

London Baker Street : (both **easyBus** and **National Express**)

easyBus operates to London Baker Street every 20 minutes, 24 hours a day. From Baker street tube station take the **London bus** numbers 13 or 82 to Golders Green tube station.

London Golders Green: (**National Express** only)

National Express operates a bus to London Victoria, providing a 24/7 service through central London.

National Express Coaches are available in the short-stay car park under the terminal and run from the airport to London Victoria.

Please take the **National Express Coach A6 to London Victoria** and the first stop is Golders Green tube station. This service runs every 20 minutes.

Get off at this stop. Upon arrival at Golders Green station you will see **Charlie's Pizza Shop** and an **old church** across the road. Follow the road in between them and you will find **Anchor House Hotel** approximately 100 metres to your right.

By Train: Take the **Stansted Express train** southbound to **Liverpool Street** station. From here take the **Hammersmith & City** (Pink Colour), **Metropolitan** (Burgundy Colour) or **Circle** (Yellow Colour) line westbound to Kings Cross St. Pancras station. From here take the **Northern** line northbound to Edgware station. You will find Golders Green 6 stations after Kings Cross St. Pancras. Upon arrival at Golders Green station you will see **Charlie's Pizza Shop** and an **old church** across the road. Follow the road in between them and you will find **Anchor House Hotel** approximately 100 metres to your right.